

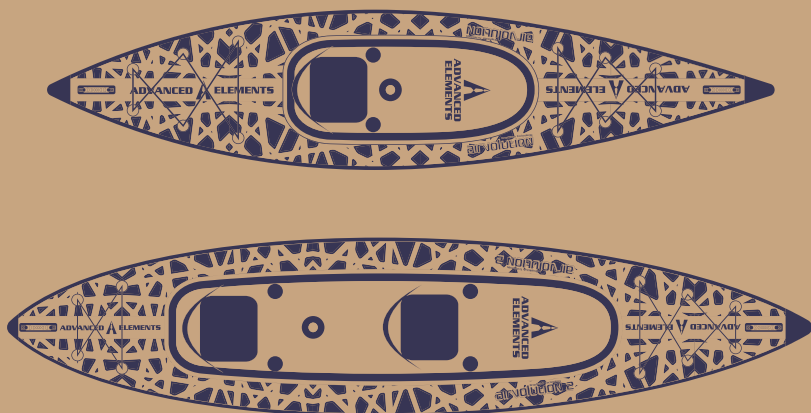
ADVANCED ELEMENTS®

THE EVOLUTION OF INFLATABLE KAYAKS

AIRVOLUTION™ INFLATABLE KAYAK

OWNER'S MANUAL
MODEL AE3029/AE3030

PATENT PENDING



1 & 2 PERSON KAYAKS

IMPORTANT!

PLEASE READ THIS MANUAL CAREFULLY BEFORE PROCEEDING. AFTER READING THIS MANUAL, SAVE THESE INSTRUCTIONS FOR FUTURE REFERENCE.



INFLATABLE KAYAKS WITH CUTTING
EDGE TECHNOLOGY

INTRODUCTION

Designed in California, our goal at Advanced Elements is to develop new and unique paddlesports products that enhance our customers' outdoor experience. Our focus is on designing and manufacturing "Inflatable kayaks with cutting edge technology" and providing excellent customer service. We are deep rooted in product development with patented technology, striving to develop inflatable kayaks, iSUPs, and paddlesports accessories that excel in performance, quality, and portability. All of our products have been designed to give paddlers the tools they need at the value that they deserve.

We feel that it is extremely important to make sure that our customers are having the best experience possible. One of the ways we do this is by a passionate focus on customer support. It is the feedback from our customers that has allowed us to excel and continue to grow over the years.

Our offices, near San Francisco California, are not only where we conceive of and design our innovative products, but also where you will find our excellent Customer Service team that is ready to answer any questions you might have about our products and offer premier product support.

We hope to see you someday soon, on the water!

Sincerely,
The Advanced Elements Team



TABLE OF CONTENTS

| | |
|--|----|
| 1. Caution/Safety | 4 |
| 1.1 Boating Safety..... | 5 |
| 2. Specification | 6 |
| 2.1 Capacity | 6 |
| 3. Setup/Inflating/Deflation Instruction | 7 |
| 3.1 Understanding Your Valves..... | 7 |
| 3.2 Pump Setup & Inflation..... | 8 |
| 3.2 Inflation Steps | 9 |
| 3.3 Over Inflation | 9 |
| 3.4 Deflation..... | 10 |
| 3.5 Folding | 10 |
| 4. Guidelines for Usage | 11 |
| 5. Proper Care and Storage | 11 |
| 6. Repairs | 12 |
| 6.1 Repairing Small Punctures and Cuts..... | 12 |
| 6.2 Repairing Pinholes | 12 |
| 7. Troubleshooting..... | 12 |
| 8. Statement of Origin | 13 |
| 9. Paddling Notes | 14 |
| 10. Warranty and Registration..... | 15 |

1. CAUTION - SAFETY WARNING

Users of this product agree by their use to accept the inherent risks involved in this paddlesports activity and agree to follow all instructions, cautions, and warnings carefully before using this Kayak.

(PLEASE READ CAUTION STATEMENT CAREFULLY)

CAUTION

SAFETY WARNING

PADDLESORTS CAN BE VERY DANGEROUS AND PHYSICALLY DEMANDING. THE USER OF THIS PRODUCT SHOULD UNDERSTAND THAT PARTICIPATION IN PADDLESORTS MAY INVOLVE SERIOUS INJURY OR DEATH. OBSERVE THE FOLLOWING SAFETY STANDARDS WHENEVER USING THIS PRODUCT.

- GET PADDLESORTS INSTRUCTIONS SPECIFIC TO THIS TYPE OF CRAFT.
- OBTAIN CERTIFIED FIRST AID TRAINING AND CARRY FIRST AID AND RESCUE/SAFETY EQUIPMENT.
- ALWAYS WEAR A NATIONALLY APPROVED PERSONAL FLOTATION DEVICE.
- ALWAYS WEAR A HELMET WHERE APPROPRIATE.
- DRESS APPROPRIATELY FOR WEATHER CONDITIONS; COLD WATER AND/OR COLD WEATHER CAN RESULT IN HYPOTHERMIA. CHECK YOUR EQUIPMENT PRIOR TO EACH USE FOR SIGNS OF WEAR OR FAILURE.
- NEVER PADDLE ALONE.
- DO NOT PADDLE IN FLOOD CONDITIONS.
- BE AWARE OF APPROPRIATE RIVER WATER LEVELS, TIDAL CHANGES, DANGEROUS CURRENTS, WEATHER CHANGES, AND STRONG OFF SHORE WINDS.
- SCOUT UNFAMILIAR WATER; PORTAGE WHERE APPROPRIATE.
- DO NOT EXCEED YOUR PADDLING ABILITY; BE HONEST WITH YOURSELF.
- CONSULT YOUR PHYSICIAN PRIOR TO BEGINNING YOUR PADDLESORTS TRAINING.
- YOU MUST NOT USE ALCOHOL OR MIND ALTERING DRUGS PRIOR TO USING THIS PRODUCT.
- FOLLOW THE MANUFACTURER'S RECOMMENDATIONS FOR THE USE OF THIS PRODUCT.
- IF ADDITIONAL OUTFITTING IS REQUIRED, USE MANUFACTURER'S APPROVED MATERIALS ONLY; DO NOT IMPAIR ENTRY OR EXIT ACCESS.
- READ OWNER'S INFORMATION PACKET PRIOR TO USING THIS PRODUCT.

THE USER OF THIS PRODUCT ACKNOWLEDGES BOTH AN UNDERSTANDING AND AN ASSUMPTION OF THE RISK INVOLVED IN PADDLESORTS.

ADVANCED ELEMENTS, INC.

TOLL FREE 866-262-9076

- Not intended for Commercial Use.
- Never use a compressor or compressed air to inflate as it could result in damage or injury.
- Do not transport a fully inflated kayak or leave it on the beach. Heat from the sun or an increase in elevation can lead to over-inflation and damage.
- Do not over-inflate, as it can damage the kayak or cause injury.

Please read this entire manual for additional safety information. Please pay close attention to items marked **DANGER, WARNING, CAUTION, IMPORTANT, NOTICE, NEVER, and ALWAYS.**

1.1 Boating Safety



This is the safety alert symbol. It is used to alert you to potential personal injury hazards. Obey all safety messages that follow this symbol to avoid possible injury or death.

| | |
|-----------------------|--|
| | <p>Indicates an imminently hazardous situation which, if not avoided, will result in death or serious injury or substantial property damage.</p> |
| | <p>Indicates a potentially hazardous situation which, if not avoided, could result in death or serious injury or property damage.</p> |
| | <p>Indicates a potentially hazardous situation which, if not avoided, may result in property damage.</p> |
| <p>CAUTION</p> | <p>Used without the safety alert symbol indicates a potentially hazardous situation, which, if not avoided, may result in property damage.</p> |
| <p>NOTICE</p> | <p>Indicates installation, operation or maintenance information which is important but not hazard-related.</p> |

The precautions listed in this manual and on the craft are not all-inclusive. If a procedure, method, tool or part is not specifically recommended, you must satisfy yourself that it is safe for you and others, and that the craft will not be damaged or made unsafe as a result of your decision. REMEMBER - always use common sense when paddling YOUR KAYAK!

2. SPECIFICATION

| | | |
|-------------------------------|---------------------|---------------------|
| Dimensions: | AE3029 | AE3030 |
| Length: | 13' | 14'6" |
| Width: | 33" | 37" |
| Weight: | 39 lbs (17.7 kg) | 52 lbs (23.5 kg) |
| Max. Person Capacity: | 235 lbs (107 kg) | 500 lbs (227 kg) |
| Max. Persons & Gear Capacity: | 300 lbs (136 kg) | 550 lbs (249 kg) |
| Recommended Pressure: | | |
| Main chamber: | 12.0 psi (0.82 bar) | 12.0 psi (0.82 bar) |
| Floor chamber: | 12.0 psi (0.82 bar) | 12.0 psi (0.82 bar) |

2.1 Capacity

The person/load capacity is determined by the availability of proper seating on the kayak. Acceptable seating determines the number of passengers, not the overall load capacity.



AirVolution™ Kayak Capacity Labels

⚠ WARNING: Do not exceed the certified maximum capacities under any circumstances. Overloading will reduce freeboard and increase the likelihood of swamping, especially in heavy seas. Overloading causes handling to become sluggish, making it difficult to react quickly.

3. SETUP/INFLATING/DEFLATION INSTRUCTION

3.1 Understanding Your Valves

Your Advanced Elements kayak uses the following valve. The 2-way military valve has the function and durability of other military type valves and is compatible with most standard pumps. Figure 1 below details how to operate the valves.

TO INFLATE: Use finger to push in center stem, rotate 1/4 turn, and allow stem to spring up into the up/outward position.

TO DEFLATE: Use finger to push in center stem and rotate 1/4 turn to lock stem down/inward.

PUSH IN CENTER STEM WITH FINGER & TURN

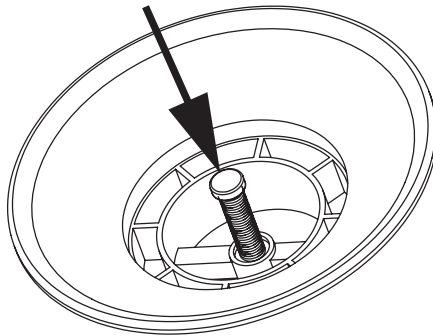


Figure 1. Inflate/Deflate of 2-way Military Valves

How the 2-way Military Valve Works:

When the valve is in the inflate (up/outward) position, the air being pumped in pushes the spring-loaded plunger open, allowing air to enter the air chamber, but not letting it escape. When the valve is in the deflate (down/inward) position, the spring loaded plunger is wide open allowing the air to come rushing out of the air chamber. If the valve is in the inflate position, the valve's plunger stem will be flush with the rim of the valve. If the valve is in the deflate position, the valve's plunger stem will be inside, or lower than, the rim of the valve. To change the valve from the inflate position to the deflate position, simply use your finger to press the valve plunger stem down/inward, and give it a 1/4 turn. This will lock the plunger open and allow the air to rush out. Use the same procedure in reverse to unlock the valve plunger, allowing it to spring up into the inflate position.

Pressure Relief Valves:

Your kayak is equipped with a pressure relief valve on both air chambers. Should the pressure in either chamber exceed the recommended rating, this valve will open slightly to release some pressure and avoid possible damage. You may hear a slight hiss should this occur. Care should be taken to not damage this valve and it should not be tampered with.

Inflation and Deflation of the Main Air Chambers should always be done through the 2-way valves only.

3.2 Pump Setup & Inflation

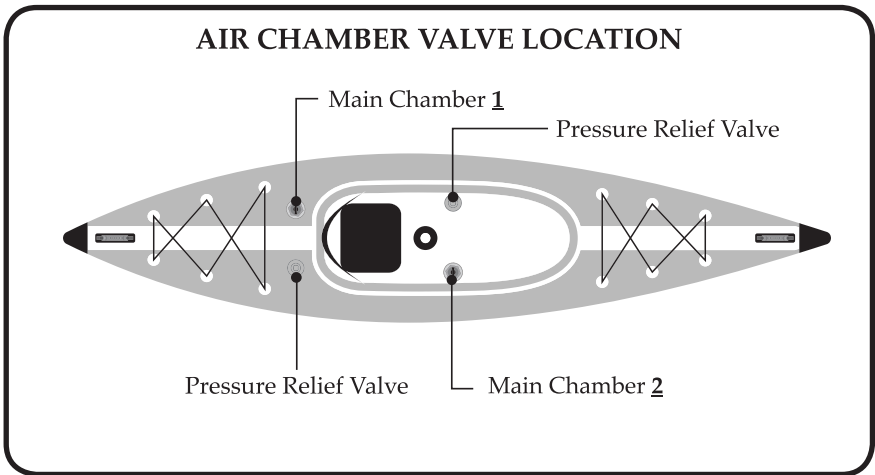


Diagram of Inflation Chambers. AE3029 Shown, AE3030 is Similar.

To begin inflating your kayak, you will need the Hand Pump that came with your boat. Please note that 12v inflators, such as those that are intended for inflatable mattresses, etc., are great as starter pumps but do not provide enough pressure to fully inflate your SUP.

WARNING: Never use a compressor or compressed air to inflate your kayak as it could result in damage or injury!

DO NOT over-inflate, as it can damage the kayak or cause injury!

Pump Set-up:

Your Hand Pump features a unique Single/Double Action feature which will help you to inflate the initial volume quickly and then reach the higher pressure needed for proper inflation. Take note of the "Action Button" just below the T-Handle of the pump. This button switches your pump between the "Single Action" and "Double Action" settings as described below. Please follow the directions printed on the pump itself for proper operation.

The Double Action setting provides high volume/low pressure inflation for a faster initial inflation of the kayak's volume.

The Single Action setting provides high pressure inflation for topping off the kayak to the specified inflation pressure.

To assemble your pump:

1. Align the tabs at the base of the pump cylinder with the corresponding notches in the pump footplate and fit together.
2. Then insert the two handles into the t-handle at the top of the pump cylinder. The two handles have finger "grooves" which should face downward so that when you grip the assembled t-handle, your fingers will rest comfortably in the grooves.
3. Lastly, attach the pump hose to the T-Handle in the inflate position (marked as "OUT") on the T-Handle.

Inflation

IMPORTANT: Inflate your kayak in the following order. **Failure to follow these instructions may cause damage to your kayak. Do not over inflate.** Be sure to read directions on operating the valves in the section *“Understanding Your Valves”*.

1. Attach the pump hose to the T-Handle in the inflate position (marked as “OUT”) on the T-Handle. Also make sure that the “Action Button” on the pump is switched to “Double Action”. *See directions on pump.*
2. Pull your kayak out of its bag and un-fold it. Always inspect for possible damage or defects prior to inflation.
3. Starting with Main Chamber 1, remove the cap from the valve and check to see if the stem in the center of the valve is up (sticking up out of the valve) or down (even with the inner rim of the valve). The stem of this valve must be in the up (inflate) position to inflate the kayak. If the valve is not in the inflate position, use your finger to push in and turn the stem counterclockwise a quarter turn and it will spring up into the inflate position. *SEE Figure 1 on PAGE 7.*
4. Attach the pump to the valve and inflate until the kayak takes shape and starts to become firm.
5. Switch the pump’s “Action Button” to “Single Action” and continue to inflate to 10.0-12.0 psi **MAX**. Make sure that you do not exceed the maximum psi or you could damage the kayak.
6. Once you are done inflating Main Chamber 1, disconnect the pump hose from the valve and close the valve using the attached valve cap. Make sure you lock the valve cap into place by turning clockwise.
7. Move to Main Chamber 2 and repeat steps 3-6.
8. When fully inflated, you’ll notice a dimple on the underside of the kayak, opposite the valve. This is normal; the drop-stitch threads in this area have been adjusted to make room for the valve.
9. Turn the kayak over and attach the removable fin by sliding it into the fin base. Then secure it with the tethered locking tab by inserting it into the corresponding notch in the fin base.
10. Attach kayak seat/s.

Inflation/Pump Use Tips:

Because you will be inflating your kayak to such a high pressure, please follow these suggestions to help you with inflation.

1. Stand the pump on hard level ground when inflating the kayak.
2. Make sure to keep your hands towards the center of the pump handles when inflating and keep your feet firmly on the foot rests. Make sure that you are standing directly over the pump so that you can utilize your body as much as your arms while inflating (this will come in handy as you get the kayak up to higher pressure).
3. When the kayak begins to reach 6.0 psi or higher, you may experience resistance in the pump. The best way to inflate your kayak to 10.0-12.0 psi (Remember DO NOT exceed the recommended psi) is to use your body weight on the down stroke and use your leg strength for the up stroke.

3.3 Over Inflation

⚠ CAUTION: Water temperature and weather will affect the air pressure of the kayak. In cold weather and water your kayak will lose some pressure. If this occurs, you may want to add a bit more air to the kayak to improve performance. In hot weather or prolonged sunlight, the air inside the kayak will expand. You must let some air out of the appropriate chambers to prevent the kayak from failing due to overpressure. You should avoid exposing your kayak to extreme temperatures (hot or cold).

WARNING: Do not transport a fully inflated kayak or leave it on the beach. Heat from the sun or an increase in elevation can lead to over-inflation and damage.

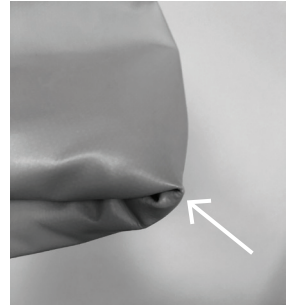
3.4 Deflation

1. Remove the caps from both main chambers, push valve stems inward and rotate to the deflate position. (See Figure 1).
2. Remove fin and seat/s.
3. Once the chambers are deflated you can use your pump to vacuum out any additional air for improved folding.

3.5 Folding

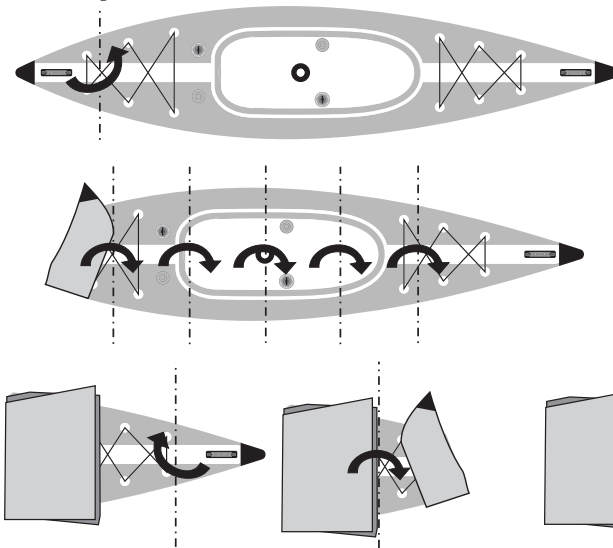
Caution: When the kayak is deflated and folded up, creased edge points at the ends of the folds (pictured right) can be vulnerable. If rubbed hard enough on an abrasive surface it can create a small rub hole in the material and a potential air leak.

When the kayak is inflated, or even unfolded and deflated, this is not a concern.



NOTICE: Reverse your pump to completely deflate all chambers.

1. Completely deflate all air chambers, thoroughly dry kayak and remove the seat/s and fin.
2. Starting at one end of the kayak, fold the end over as shown in the illustration below. Take care not to put too much pressure on the nose cap when folding as you do not want to risk deforming it.
3. Roll up the kayak in even sections at a size that will fit into the duffel bag.
4. Once you reach the other end of the kayak, fold the end over similar to step 1 (shown in illustration below) and finish rolling up kayak.
5. Secure with provided strap.
6. Place into duffel bag.



4. GUIDELINES FOR USAGE

Paddlesports can be very dangerous and physically demanding. The user of this product should understand that participation in paddlesports may involve serious injury or death. Observe the following safety standards whenever using this product. The user of this product acknowledges both an understanding and an assumption of the risk involved in paddlesports.

After you have inflated your kayak and before you put it in the water, inspect your equipment for obvious signs of wear or failure. Review local rules and regulations and read again the "CAUTION" statement.

Most areas have local laws and regulations about the use and equipment of small boats. Usually a phone call to the local authorities will provide you with the needed information. Some areas may require that you register and display a registration number on the front of your kayak. Once you have been issued a number, it is best to affix it to the kayak by printing it on the material with a permanent ink marker. If you are required to display a sticker or vinyl letters, an inflatable boat ID kit can be purchased at most marine stores.

Your kayak is designed to be paddled with a double bladed kayak paddle. Paddle with short and even strokes. Keep the blade close to the kayak and the paddle almost vertical. Pull with your lower hand and push with your upper hand. To reduce the amount of swaying at the front of the kayak, ease off on the force of your stroke. Paddling with a backward stroke can sometimes offer quick maneuverability.

ALWAYS practice safety and take the time to learn about the area where you are paddling. Get official information about the local tides and currents before paddling there. Be careful that you do not over estimate your strength, your endurance or your skill. Be careful never to underestimate weather conditions. Be aware of the dangers before you begin. Be aware of your skill level. Be sure you understand and accept the risk of these dangers. There are many paddling clubs all over the world. These can be a great source of information on places to paddle, people to paddle with and most importantly, continued safety practices.

5. PROPER CARE AND STORAGE

Your inflatable kayak is made of very durable materials. However, like anything else, proper use and care will increase the life of your kayak. Before storing your kayak, make sure it is both CLEAN and DRY. You may clean your kayak with a mild soap and water. **NEVER** use strong solvents to clean your kayak as they will destroy the material.

If your kayak has been used in salt water, rinse it off with fresh water and allow it to dry before storing. Use a dry towel to wipe up all moisture. It should be deflated and kept out of direct sunlight when stored. Avoid exposure to extreme temperatures (hot or cold). If your boat is exposed to freezing temperatures while storing, allow it to warm up before unfolding.

Do not leave your kayak inflated in direct sunlight for long periods of time unless it is in the water. Hot air expands, so with this, if you leave your kayak on the beach, or on the pavement in a parking lot, or strapped to the roof of an automobile fully inflated for a long period of time, the air inside the kayak will expand and cause over inflation, damaging your boat. If you leave your kayak out in the sun for a long time, just let about half of the pressure out and then re-inflate when you are ready to go back out.

6. REPAIRS

Your kayak comes with a repair kit that includes glue, several patches, and a valve wrench. This should remain with the kayak in the event that you may need it.

NOTE: The valve wrench included with this kayak is for maintenance **ONLY**. After many seasons of use, you may find that the valve/s on your main chamber/s have loosened a little and are slowly seeping air. The included valve wrench will assist you in re-tightening your valves.

DO NOT attempt to loosen, remove, or service the valve while the kayak is inflated as this could cause damage and **SERIOUS INJURY!**

If more detailed repair is needed for your kayak, please contact our Customer Service for assistance via email at info@advancedelements.com or call 1-866-262-9076.

6.1 Repairing Small Punctures and Cuts

1. Cut a rounded patch at least $\frac{1}{4}$ " or $\frac{1}{2}$ " larger than the hole or cut.
2. Clean the area where the patch will be placed with water and/or mild soap.
3. Make sure all surfaces are dry.
4. In a well ventilated area, spread a thin layer of glue on both the patch and on the damaged area. Let it sit for three to five minutes or until tacky.

6.2 Repairing Pinholes

1. Inflate the PVC tube. Locate the pinhole by sponging soapy water over the tube until you see air bubbles. Mark the location of the pinhole.
2. Deflate the tube and dry the affected area. Apply a drop of glue to the pinhole.
3. Allow glue to dry completely.
4. Do not inflate the kayak for at least twelve hours.

7. TROUBLESHOOTING

PROBLEM

Does not hold air while inflating

SOLUTION

The spring valve uses a plunger system. The only time the plunger should be in the open position is when you are deflating. Make sure that the plunger is closed to inflate. Push the plunger in and rotate counter-clockwise.

The kayak is sagging.

Be sure that the right pump is being used. You need the pump that came with the kayak or a single-action hand pump. A 12-V electric does not supply enough pressure to fully inflate the kayak. The 12-V can be used to partially inflate the kayak but one of the other pumps is needed to top it off.

The kayak will not hold full pressure for more than couple of hours.

Make sure that the plunger is in the closed position. It should only be open when deflating. If it is open, the only seal is the rubber gasket inside the cap. Even then, a little air may still leak out.

The kayak still loses air.

If you have checked all the previous possible reasons for the kayak losing air, then there may be a pinhole or hole somewhere on the tube. Inflate the air chamber that is losing air. If you cannot see or hear where a leak may be, take a clean rag with soapy water and begin rubbing the tube. If a hole is present, bubbles will continually form. Repair using repair kit. If it is a very small pinhole, a dab of the glue may be sufficient.

Note: If your state requires the licensing of this boat, please use the form below. If you need any assistance filling out this form, please contact Advanced Elements Customer Service Department.

MANUFACTURER'S STATEMENT OF ORIGIN
FOR A VESSEL SOLD IN THE STATE OF _____

The undersigned manufacturer hereby certifies that the new boat described below, the property of said manufacturer, has been transferred this _____ day of _____, 20____ on Invoice# _____ to:

Owner's/Dealer's Name _____
Address _____
City, State, Zip _____

Model Name _____ Model Year _____ Manufacturer's Hull Identification# _____
○ Airvolution/Airvolution 2™ Kayak (AE3029/AE3030) HIN# _____

Type: Kayak Hull Material: PVC/Polyester
Length Overall: 13' / 14'6" Beam: 33" / 37"

U. S. Coast Guard Capacity Plate Information (where applicable):
Maximum persons capacity in whole persons: 235 lbs (107 kg) / 500 lbs (227 kg)
Maximum weight capacity (persons & gear): 300 lbs (136 kg) / 550 lbs (249 kg)

The manufacturer further certifies that this was the first transfer of such new boat and that all information given herein is true and accurate to the best of their knowledge



P.O. Box 5128 Concord, CA 94524

Signature _____

FIRST ASSIGNMENT

FOR VALUE RECEIVED, in the amount of \$ _____,
the undersigned hereby transfers the Certificate of Origin and the boat described therein
to _____

Address _____

and certifies that the boat is new and has not been registered in this or any other state; Advanced Elements, Inc. also warrants the title of said boat at time of delivery, subject only to the liens and encumbrances as set out below:

| Amount of Lien | Date | To whom Due | Address |
|----------------|-------|-------------|---------|
| _____ | _____ | _____ | _____ |

Dates _____ 20____, at _____

By: _____

Transferrer (Firm name) Sign Here _____

Before me personally appeared _____ who by me being duty sworn under oath says the statements set forth above are true and correct. Subscribed and sworn to me before this _____ day of _____ 20____.

Notary Public Date commission expires _____

(SEAL)

PADDLING NOTES:

It is always a good idea to keep notes of your paddling experiences. Your notes can serve as a reminder of what to look out for, as well as what gear to bring along, and what conditions are like.

| DATE | TIME | LOCATION | NOTES |
|------|------|----------|-------|
| | | | |

OUR GUARANTEE

It is very important to us that you are 100% satisfied with your Advanced Elements product. If you are not satisfied for any reason at all please call us immediately Toll Free at 866-262-9076. Please use the Warranty Registration Form at: www.advancedelements.com/warranty to register your Advanced Elements Product.

LIMITED WARRANTY

Advanced Elements, Inc. warrants this product to be free from defects in material or workmanship for a period of one year from the date of purchase. Products that prove to be defective under conditions of normal and proper use during the warranty period because of defective workmanship or faulty material will be replaced or repaired without charge. For warranty service, contact Advanced Elements, Inc.

Advanced Elements, Inc shall inspect all warranty claims and in the event of a defect, repair or replace the defective part or entire item, at its option. The purchaser must, before return of a defective product, obtain from Advanced Elements, Inc, a return authorization number and return center address. Please write or call as listed below. Once an authorization number is obtained, the purchaser must ship the product, POSTAGE PREPAID, to Advanced Elements, Inc for repair. Do not ship to P.O. Box address as it may be sent back.

This warranty does NOT cover:

Products used for rental, for hire or in professionally guided tours and other uses not considered normal recreational purposes; and punctures, cuts and abrasions sustained in normal use; and items involved in accidents; and items damaged in white water mishaps, and other unreasonable uses or improper storage.

Advanced Elements, Inc shall within (30) days from receipt of an authorized return from purchaser, perform its responsibilities in conformance with this warranty.

THERE ARE NO WARRANTIES WHICH EXTEND BEYOND THE DESCRIPTION OF THE FACE HEREOF.
ADVANCED ELEMENTS SHALL NOT BE HELD LIABLE FOR INCIDENTAL AND CONSEQUENTIAL DAMAGES.

THIS WARRANTY IS INCLUSIVE IN LIEU OF ALL OTHER WARRANTIES.

This warranty gives you specific legal rights, and you may also have other rights that vary from state to state.

Advanced Elements, Inc.

P.O. Box 5128, Concord, CA 94524

Toll Free - 866-262-9076 - email info@advancedelements.com - www.advancedelements.com

IMPORTANT!

**PLEASE READ THIS MANUAL CAREFULLY BEFORE PROCEEDING.
AFTER READING THIS MANUAL, SAVE THESE INSTRUCTIONS
FOR FUTURE REFERENCE.**

**If you would like a catalog of our latest products please
visit our website at
www.advancedelements.com
or call Toll Free 866-262-9076**